

CTH4 500 T4 1,5kW (278500106)

GENERAL DATA



ROOF FAN, VERTICAL DISCHARGE

MANUFACTURING FEATURES

- Fan made of steel with polyester powder finishing coat.
 - High efficiency backward impeller with self-cleaning system of steel.
 - Standard asynchronous motor with IP-55 protection and Class F insulation.
- Manufactured with standard voltages: 400V 50Hz three phase motors

APPLICATIONS

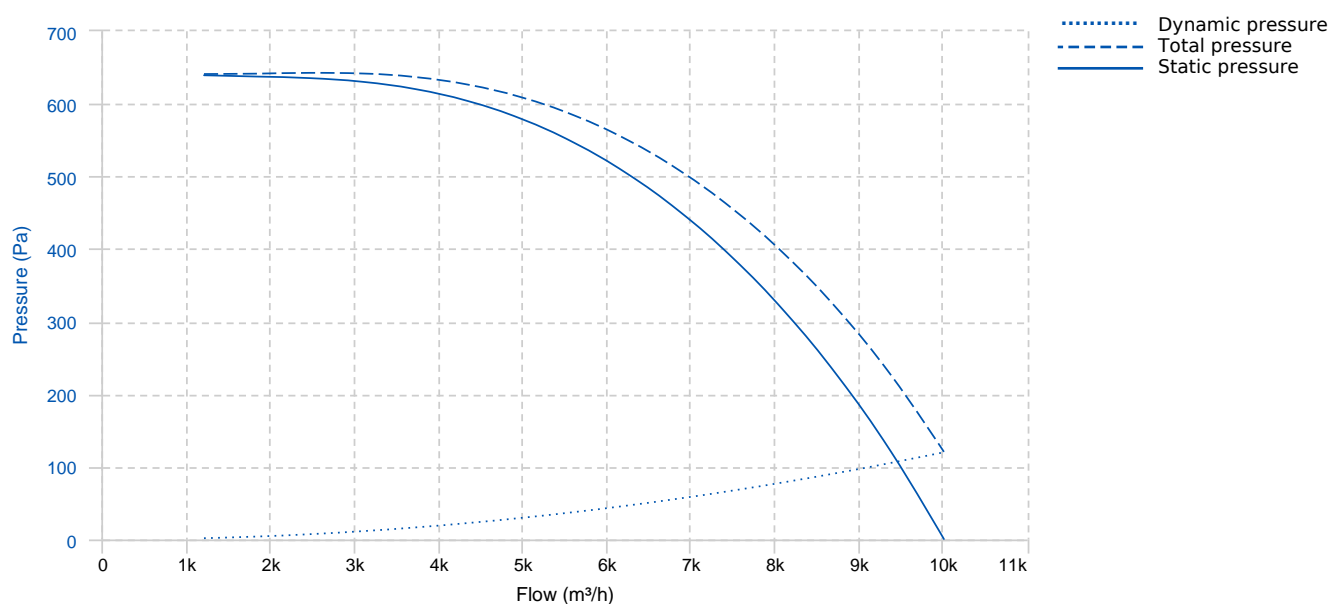
Specially designed for roof installation, with vertical discharge without any additional kit, they are suitable for:

- Smoke extraction
- Air renewal in buildings and industries.
- Industrial and professional kitchen hoods.
- Maximum continuous operation temperature: 80°C (fluide).
- Maximum ambient temperature: 50°C.
- Cinemas.

UNDER REQUEST

- Version made of inox 304/316.
- Finishing C4-C5.
- Special voltages.

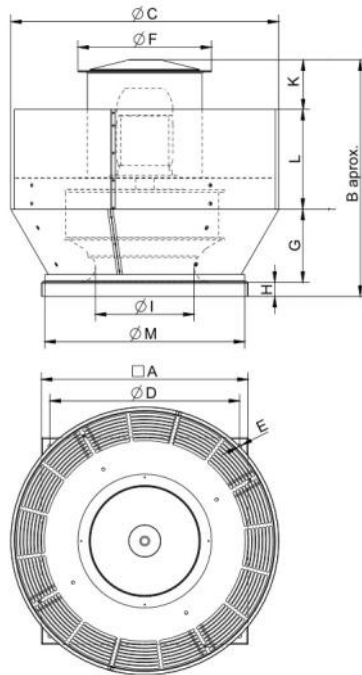
PERFORMANCE CURVE



TECHNICAL DATA

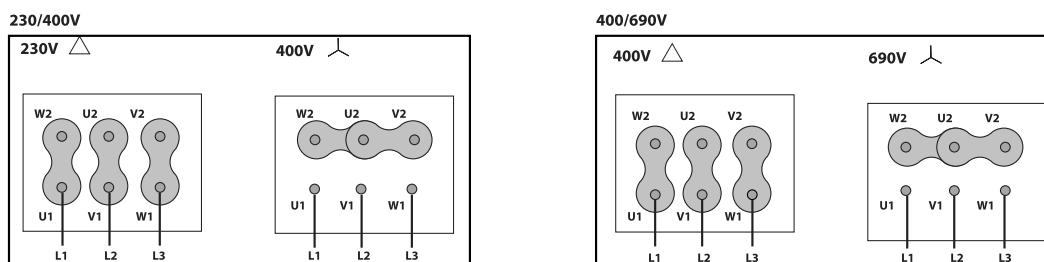
Fan							
RPM	1450	Approx. weight	53 kg	Max. Flow	10010 m ³ /h		
Motor							
Power	1,5 kW	RPM	1450	I max. (230V)	5,67 A	I max. (400V)	3,26 A
Size	90L	Approx. weight	22 kg	Efficiency (%)	85.3 %	FP	0.8

DIMENSIONS



Dimensions (mm)									
A	650	B	771.5	D	590	G	237	H	40
K	188	L	307	ØC	852	ØE	12	ØF	434
ØI	335	ØM	628						

WIRING DIAGRAM



ACCESSORIES



SAFETY SWITCH
INT 25 3P A
REF: INT253PA

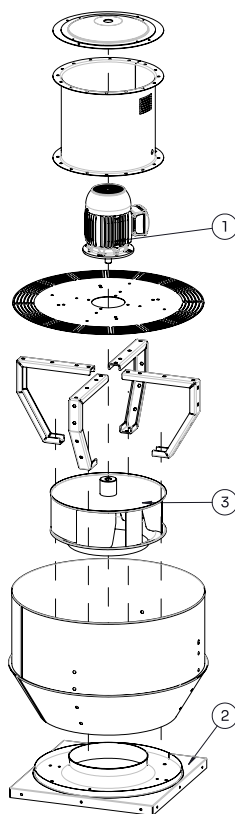


FREQUENCY SPEED CONTROLLER
SFC 230 I 7A *
REF: SFC230I007



FREQUENCY SPEED CONTROLLER
SFC 400 III 3,6A *
REF: SFC400III4

SPARE PARTS





	Code	Model	Qty
1	721001156	MOTOR 1,5kW T4 B5 230/400V	x1
3	R-279509381	IMPELLER THRE R63B1 500X160x24 RD	x1